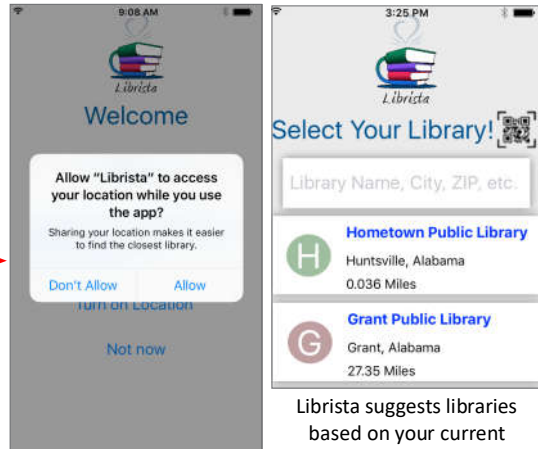


Librista for Apple

Librista for Apple gives you and your patrons easy and engaging ways to find items and community posts while also letting you manage personal accounts. Once you begin to use the app, Librista displays slides that provide an overview of basic features.

Allowing location access lets you find the closest Atrium library and get directions.

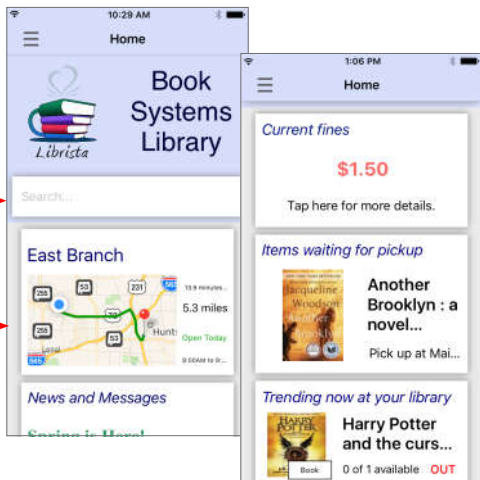


Librista on iPhone

Librista suggests libraries based on your current location, but you can also search by name, city, ZIP, keyword, etc. to find your library.

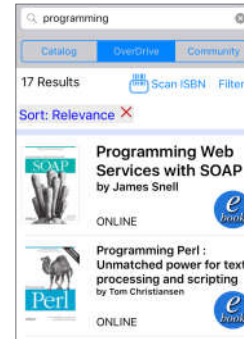
Begin searching the catalog at any time.

Tap the map to open the **Maps** app for directions. Tap the library name to open **Branch Info** within Librista.

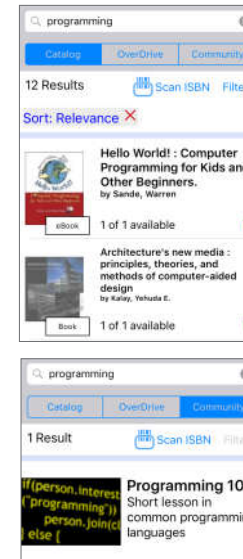


When you're logged on, you may see cards specific to your account. Swipe up and down to scroll through cards; swipe left or right to dismiss them.

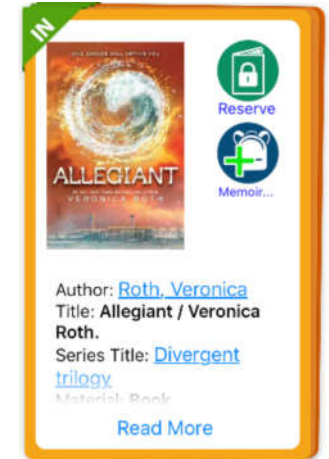
View results from your library's catalog, OverDrive resources, and Community posts.



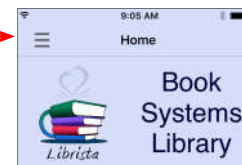
Librista on iPhone



Tap a title from anywhere to open details. Tap icons to reserve the item or add it to a bookbag.

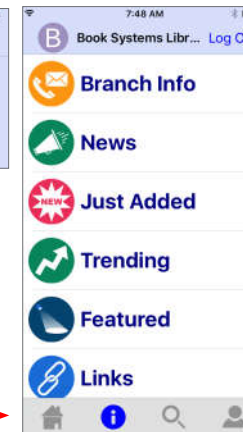


Tap to open main menu.



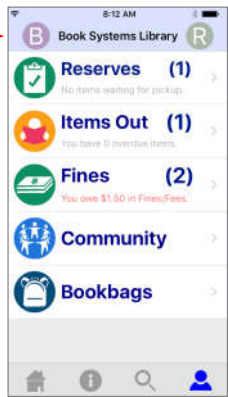
Librista on iPhone

Tap the icons at the bottom to move around Librista.



Tap menu options to find additional information, highlighted items, links to other sites, and more.

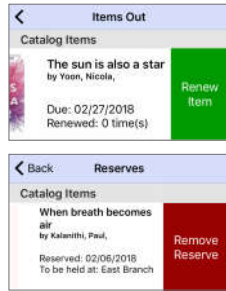
Swipe right on the library icon to switch libraries.



Librista on iPhone

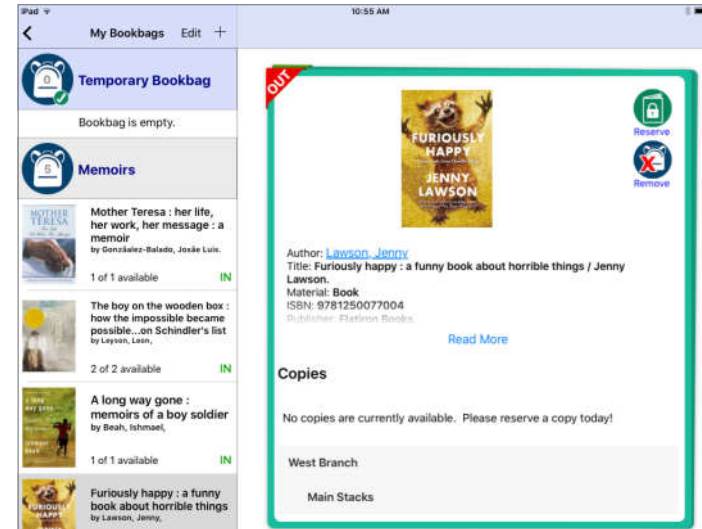
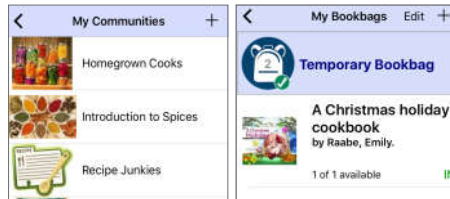
Swipe left on the patron icon to switch users.

Tap the person icon to see information and features related to your account (must be logged on).



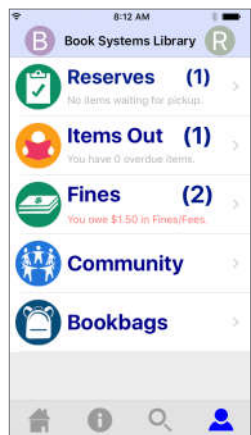
Swipe left to see an action. Tap to continue.

Add and edit community posts and bookbags.



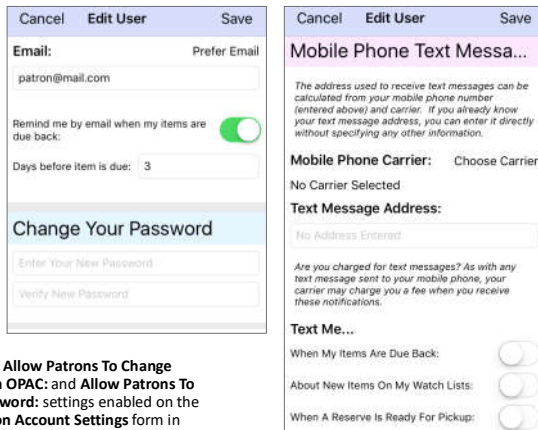
Librista on iPad (landscape view)

Librista on iPad devices gives you all the same great functionality with more space. In portrait view, the menu/results panel displays with the item cards or home screen open behind it. In landscape view, the menu/results pane displays on the left while the item cards or home screen displays on the right (pictured here).



Librista on iPhone

Tap the patron icon to enter your contact information, change your account password, or enable additional notification settings.

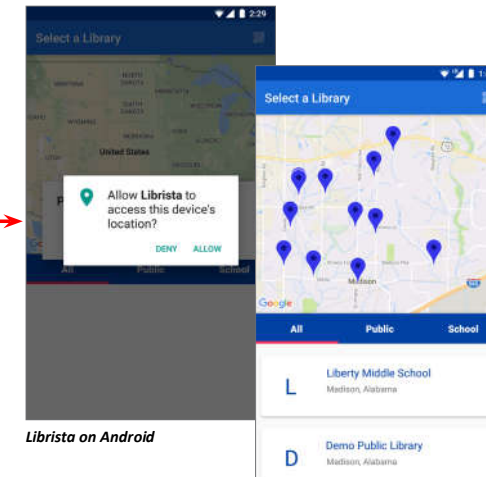


You must have the **Allow Patrons To Change Account Info From OPAC**; and **Allow Patrons To Change Their Password**: settings enabled on the **General And Patron Account Settings** form in Atrium.

Librista for Android

Librista for Android devices provides a powerful searching tool for your library's catalog and allows you to access account information.

Allowing location access lets you find the closest Atrium library.

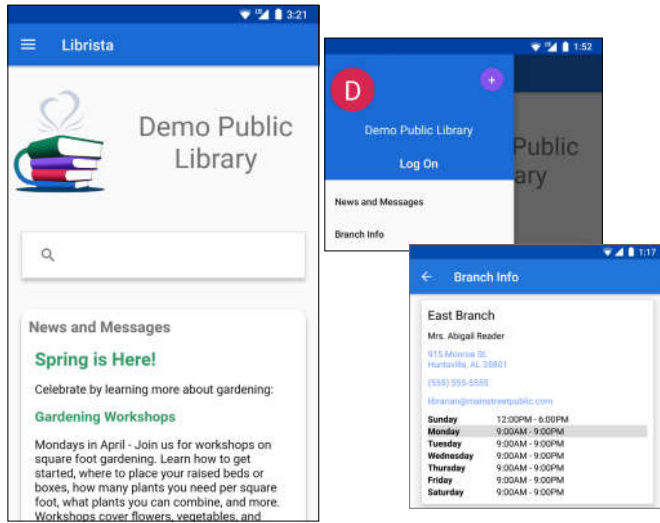


Librista on Android

Use the Library Locator to select your library: tap blue markers on the map to jump to a particular location or scroll through the list. As you scroll, a search box displays if you need to enter your library name, city, ZIP, etc. When you find the correct library, tap the name.

Tap the tabs to specify if you want to see **All** libraries in the Library Locator or only **Public** libraries or **School** libraries.

Tap the menu button to access library information and patron account options.

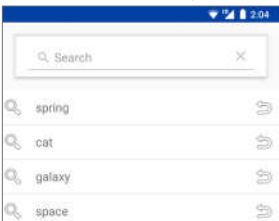


Begin a catalog search by entering a term in the search box.

Cards display the library's News and Messages plus Items Out (as applicable if you are logged on).

Librista on Android

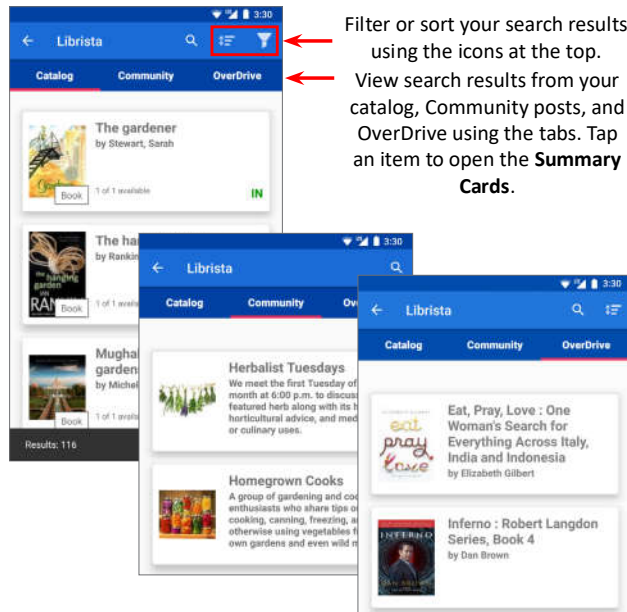
When you tap in a search field, Librista displays your search history.



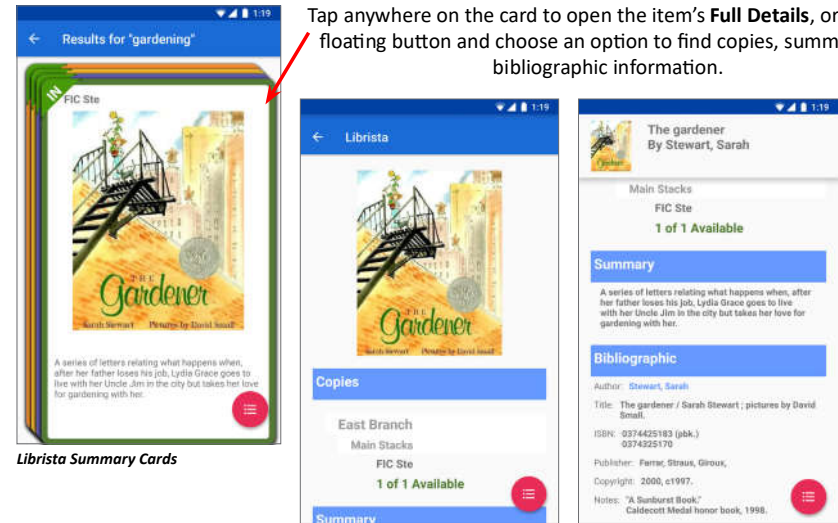
When you begin typing, Librista displays potential suggestions.



Filter or sort your search results using the icons at the top. View search results from your catalog, Community posts, and OverDrive using the tabs. Tap an item to open the Summary Cards.



Tap anywhere on the card to open the item's Full Details, or tap the floating button and choose an option to find copies, summary, or bibliographic information.

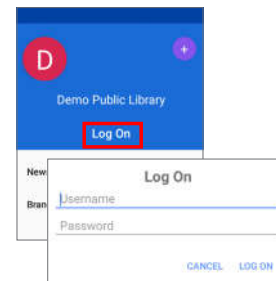


Librista Summary Cards

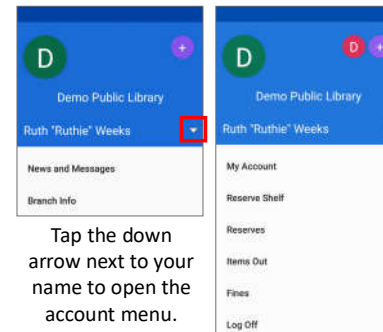
Librista Full Details

If you scroll far enough for the dust jacket to go offscreen, a row pops up with a thumbnail image, title, and author so you can always identify the item.

To access user account information, tap Log On, enter your Username and Password, and tap LOG ON.



Tap the down arrow next to your name to open the account menu.



Tap options in the account menu to change your account info, view items reserved or out, and see fines. Just two examples are shown here.

